

HOFGAS[®] - Efficiency

The High Class Landfill Gas Flare

The **HOFGASⁱ - Efficiency** high temperature flare provides safe and environmentally-friendly combustion of landfill gas.

The exhaust gas emissions meet the stringent requirements. This is achieved with combustion temperatures between 1'000 - 1'200°C and a defined residence time of > 0.3s.

As soon as the start command is given and the required start pressure is reached the **HOFGASⁱ - Efficiency** flare starts up. Ignition is activated by an automatic ignition device. The burner control unit controls the ignition process and monitors the flame. The combustion is automatically regulated by the air supply in relation to the optimum combustion temperature.

All control functions are integrated in a weather proof control cabinet, wired up ready for connection.

Reliable disposal of landfill gas with high safety and quality standard.



HOFGAS[®] - Efficiency 250

- ✓ Efficient combustion of landfill gas
- ✓ Automatic temperature control
- ✓ Controlled and concealed combustion
- ✓ Combustion temperature 1'000 - 1'200°C
- ✓ Residence time more than 0.3 s
- ✓ Insulated combustion chamber
- ✓ High safety standard

General specifications

Gas flow rate	40 - 6'000 Nm ³ /h
Burner capacity up to	30'000 kW
Methane concentration	30 - 50 vol. %
Combustion temperature	1'000 - 1'200 °C
Residence time	> 0.3 s
Turn down ratio	1 : 5
Initial gas pressure	80 - 150 mbar
Expected sound pressure level at full load (at 15m distance and 2m height)	< 69 dB(A)

Safety features

- Flame arrester
- Slam shut valve
- Burner control unit with UV detection

Site preparation

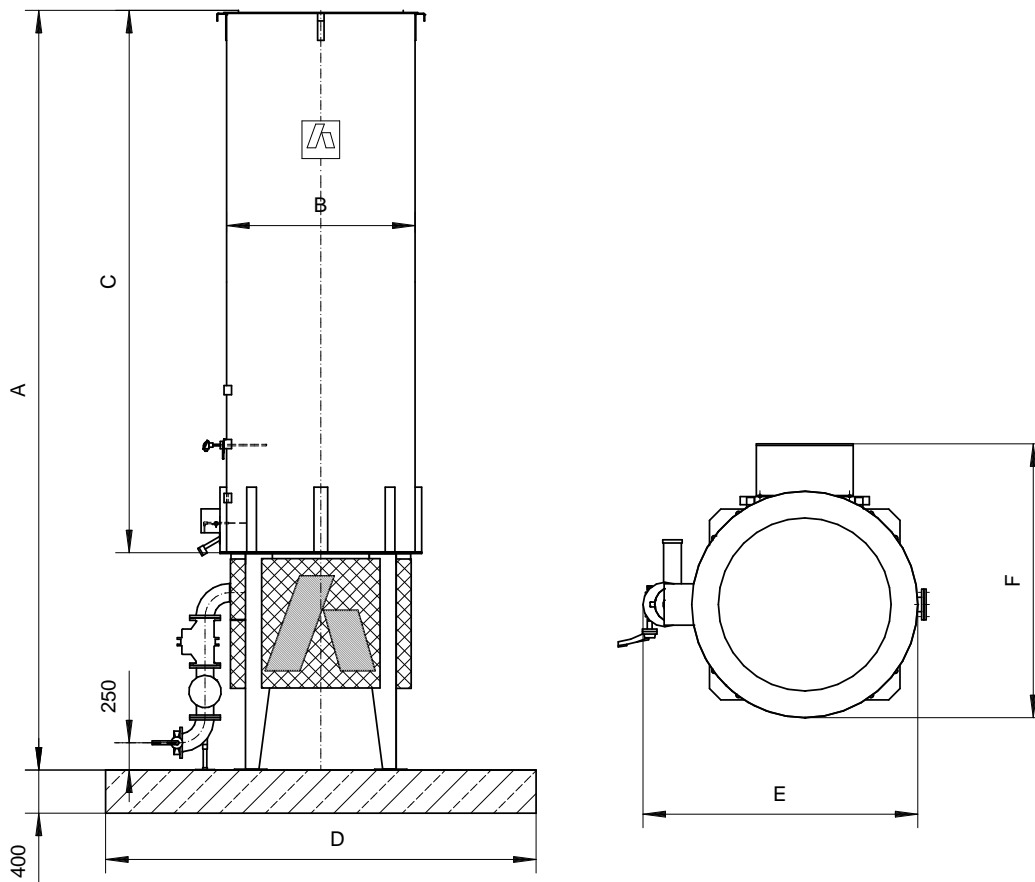
- Preparation of location (fence, access road etc.)
- Foundation
- Pre-dewatering
- Electricity supply
- Pipeline connection

Options

- Frost protection
- Extended turn down ratio up to 1:20

More options are available on request

HOFGAS[®] - Efficiency



Specification for standard units

HOFGAS ^{ci} -	Gas flow rate (max.)	Burner capacity (max.)	Flange connection	Initial gas pressure at full load (min.)	Dimension A	Dimension B	Dimension C	Dimension D	Dimension E	Dimension F	Weight (approx.)
	Nm ³ /h	kW	DN/PN	mbar	mm	mm	mm	mm	mm	mm	kg
Efficiency 40	40	200	40/16	45	4'800	Ø 560	3'000	2'500	920	1'100	700
Efficiency 100	100	500	50/16	80	5'300	Ø 720	3'500	2'500	1'120	1'140	900
Efficiency 150	150	750	50/16	80	5'800	Ø 800	4'000	2'500	1'200	1'220	1'200
Efficiency 300	300	1'500	80/16	80	6'500	Ø 960	4'500	3'000	1'350	1'420	1'400
Efficiency 600	600	3'000	100/16	80	6'500	Ø 1'280	4'500	3'000	1'690	1'700	1'800
Efficiency 800	800	4'000	125/16	80	6'500	Ø 1'440	4'500	4'000	1'900	1'810	2'200
Efficiency 1000	1'000	5'000	150/16	80	7'000	Ø 1'590	5'000	4'000	2'170	2'130	2'600
Efficiency 1500	1'500	7'500	150/16	100	7'000	Ø 1'760	5'000	4'000	2'290	2'300	3'000
Efficiency 2000	2'000	10'000	200/16	100	7'700	Ø 1'920	5'500	4'000	3'210	2'440	3'600
Efficiency 2500	2'500	12'500	200/16	100	8'200	Ø 2'070	6'000	4'000	3'330	2'600	3'900
Efficiency 3000	3'000	15'000	200/16	130	8'200	Ø 2'240	6'000	4'000	3'470	2'770	4'200
Efficiency 5000	5'000	25'000	300/16	130	8'300	Ø 3'100	6'100	6'000	4'300	4'500	8'500
Efficiency 6000	6'000	30'000	300/16	130	8'300	Ø 3'800	6'100	7'000	5'000	5'200	9'000