

HOFGAS[®] - Ready

Preparation Unit for Gas Utilisation

The **HOFGAS[®] - Ready** is a complete extraction and flaring station for safe and economic degassing of landfill sites. The gas is collected continuously and prepared for further use. The installation can be equipped with a gas utilisation connection for the purpose of energy recovery.

A controlled combustion with concealed flame is guaranteed by the **HOFGAS[®] - Efficiency** high temperature flare.

All components are mounted onto a robust, galvanised steel skid. The electrical control is placed directly on the installation, in a weather proof control cabinet. The installation is easy to operate with the PLC panel.

Using a crane, the operational **HOFGAS[®] -Ready** can be set up on the prepared site without the need of special tools.

Provides gas valorisation within the bounds of legal requirements – a clean solution–.



HOFGAS[®] - Ready 600

- ✓ Preparation of the gas for utilisation
- ✓ Ideal equipment for CDM purposes
- ✓ Robust construction
- ✓ Skid mounted
- ✓ Quick installation
- ✓ Easy to operate
- ✓ High safety standard

General specifications

Gas flow rate	40 - 2'500 Nm ³ /h
Burner capacity up to	12'500 kW
Blower pressure rise max.	210 mbar
Methane concentration	30 - 50 vol. %
Combustion temperature	1'000 - 1'200 °C
Residence time	> 0.3 s
Turn down ratio	1 : 5
Expected sound pressure level at full load (at 15m distance and 2m height)	< 69 dB(A)

Safety features

- EEx motor
- Flame arresters
- Slam shut valve
- Burner control with UV detection

Site preparation

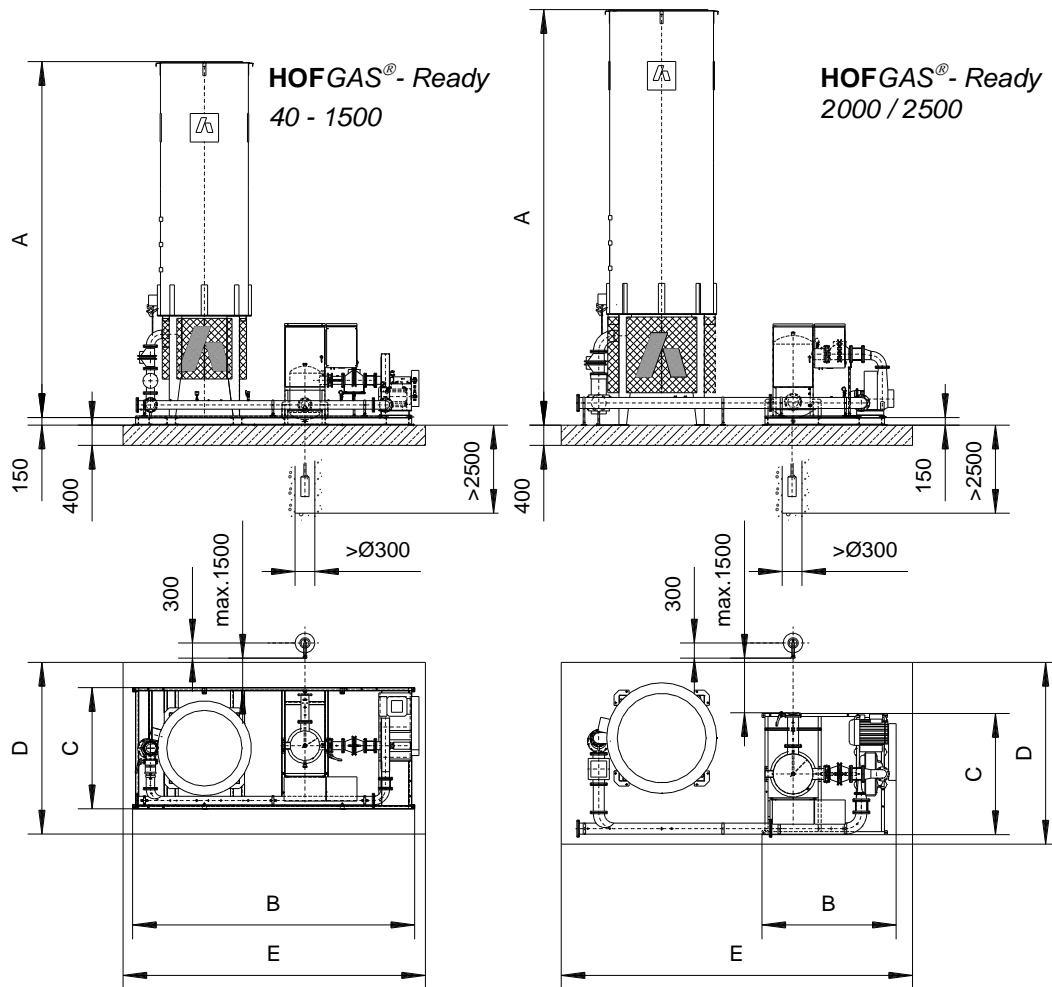
- Preparation of location (fence, access road etc.)
- Pre-dewatering
- Foundation
- Electricity supply
- Pipeline connection
- Condensate disposal

Options

- Higher blower pressure (for gas utilisation)
- Gas analysis system
- Telemonitoring
- Measuring and control technology

More options are available on request

HOFGAS[®] - Ready



Specification for standard units

HOFGAS [®] -	Gas flow rate (max.) Nm ³ /h	Burner capacity (max.) kW	Flange connection DN/PN	Power of el. motor kW	Fuse protection A	Suction pressure mbar	Supply pressure mbar	Blower pressure rise mbar	Dimension A mm	Dimension B mm	Dimension C mm	Dimension D mm	Dimension E mm	Weight (approx.) kg
Ready 40	40	200	40/16	2.5	20	-50	45	105	5'000	3'120	1'800	2'600	4'000	1'300
Ready 100	100	500	50/16	3.3	20	-50	80	150	5'500	3'120	1'800	2'600	4'000	1'500
Ready 150	150	750	50/16	3.3	20	-50	80	150	6'000	3'120	1'800	2'600	4'000	1'800
Ready 300	300	1'500	80/16	5.5	32	-60	80	180	6'700	3'120	1'800	2'600	4'000	2'200
Ready 600	600	3'000	100/16	11	40	-60	80	180	6'700	3'420	2'000	3'000	4'500	2'700
Ready 800	800	4'000	125/16	15	40	-60	80	180	6'700	4'850	2'400	3'400	5'850	3'300
Ready 1000	1'000	5'000	150/16	18.5	63	-60	80	180	7'200	4'850	2'400	3'400	5'850	3'600
Ready 1500	1'500	7'500	150/16	18.5	63	-60	80	180	7'200	5'620	2'400	3'400	6'620	4'400
Ready 2000	2'000	10'000	200/16	30	100	-80	100	210	7'700	2'400	2'400	4'000	8'000	5'200
Ready 2500	2'500	12'500	200/16	37	100	-80	100	210	8'200	2'400	2'400	4'000	8'000	5'500
Ready 3000..5000 on request														