

# HOFGAS<sup>®</sup> - IFL2c

## Flare for gasholder operations in keeping with gas-emission regulations

Standard flare for sewage or biogas plants. Ideal in combination with gasholder operation and gas systems with constant pressure ratios.

The **HOFGAS<sup>®</sup> - IFL2c** flare is deployed when express regulations on gas-emission must be observed. Because of no visible flame, erection of the flare burner is most advantageous even near residential areas.

The plant is simple to operate and adjust, and starts reliably. The flare burner comes with the latest safety technology.

Exhaust emission levels are kept within current regulations.



**HOFGAS<sup>®</sup> - IFL2c 2500**

- ✓ Emission levels are kept within current regulations (TA-Luft, EA Standards, etc.)
- ✓ Concealed flame
- ✓ Combustion temperature > 900°C
- ✓ Residence time ≥ 0.3s
- ✓ Gasholder operations
- ✓ High standards of safety

### General specifications

Gas flow rate	60 - 4'000 Nm <sup>3</sup> /h
Burner capacity up to	32'000 kW
Methane concentration	60 - 75 vol. %
Combustion temperature	> 900 °C
Residence time	≥ 0.3 s
Initial gas pressure	> 25 mbar
Expected sound pressure level at full load (at 15m distance and 2m height)	< 69 dB(A)
Power consumption	< 1 kW

### Safety features

- Flame arrester
- Slam shut valve
- Burner control with UV detection
- Monitoring of temperature in combustion chamber

### Site preparation

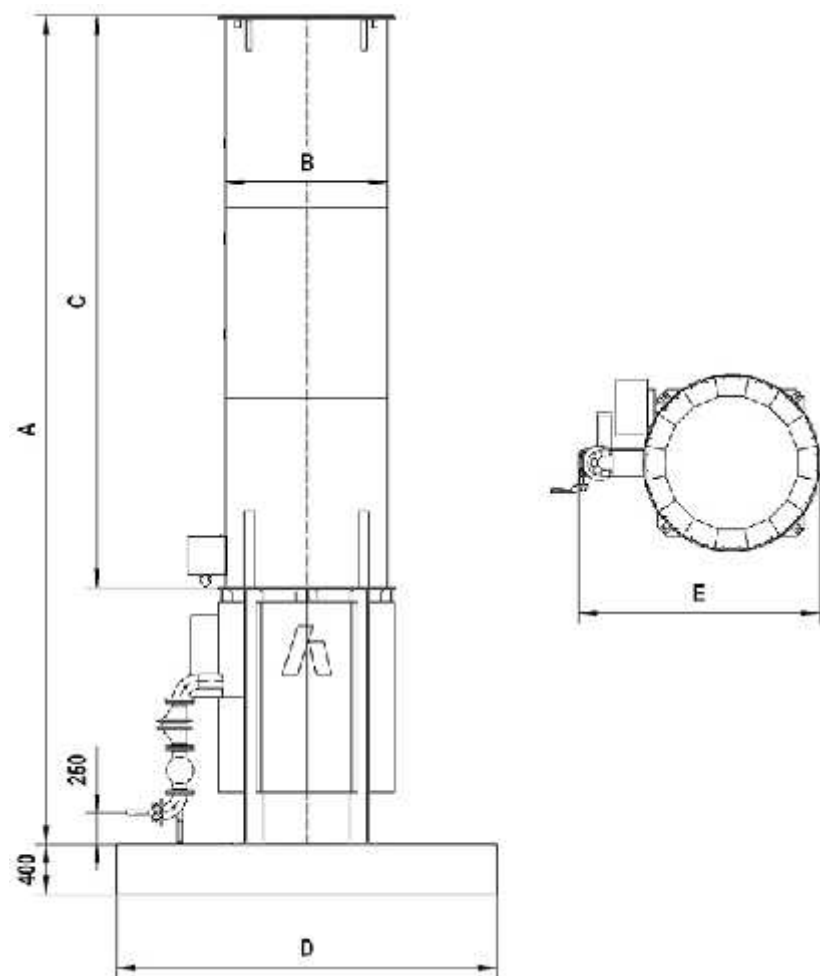
- Preparation of location (fence, access road, etc.)
- Foundation
- Pre-dewatering
- Electricity supply
- Pipeline connection

### Options

- Stainless steel design
- Frost protection
- Low noise combustion

More options are available on request

# HOFGAS<sup>®</sup> - IFL2c



## Specification for standard units

HOFGAS <sup>i</sup> -	Gas flow rate (max.) Nm <sup>3</sup> /h	Burner capacity (max.) kW	Flange connection DN/PN	Initial gas pressure at full load (min.) mbar	Dimension A mm	Dimension B mm	Dimension C mm	Dimension D mm	Dimension E mm	Weight (approx.) kg
IFL2c 60	60	450	50/16	25	5'300	Ø 720	3'500	2'500	1'120	900
IFL2c 90	90	675	50/16	25	5'800	Ø 800	4'000	2'500	1'200	1'200
IFL2c 180	180	1'350	80/16	25	6'500	Ø 960	4'500	3'000	1'350	1'400
IFL2c 360	360	2'700	100/16	25	6'500	Ø 1'280	4'500	3'000	1'690	1'800
IFL2c 500	500	3'750	125/16	25	6'500	Ø 1'440	4'500	4'000	1'900	2'200
IFL2c 650	650	4'875	150/16	25	7'000	Ø 1'590	5'000	4'000	2'170	2'600
IFL2c 1000	1'000	7'500	200/16	25	7'000	Ø 1'760	5'000	4'000	2'290	3'000
IFL2c 1250	1'250	9'375	200/16	25	7'700	Ø 1'920	5'500	4'000	3'210	3'600
IFL2c 1500	1'500	11'250	250/16	25	8'200	Ø 2'070	6'000	4'000	3'330	3'900
IFL2c 2000	2'000	15'000	250/16	30	8'200	Ø 2'240	6'000	4'000	3'470	4'200
IFL2c 2500.. 4000 on request										