

# HOFGAS<sup>®</sup> - Lowcal

## Even the weak have power

An optimum solution for safe and efficient degassing of old landfill sites or sites with low quality gas. The innovative **HOFGAS<sup>i</sup> - Lowcal** high temperature flare is designed to provide greater gas control during the latter phases of a site.

Low calorific gas high temperature combustion is necessary on more and more sites due to increased aftercare requirements. With a suction pressure regulation the landfill is stabilised and the gas concentrations are monitored continuously by means of gas analysis.

Hofstetter gas control systems have been successfully implemented on landfill sites for more than 35 years. With **HOFGAS<sup>i</sup> - Lowcal**, the existing gas collection system can continue to be used. And thanks to the high temperature combustion, the emissions values comply with the regulations in force.

Reliable, safe and efficient. The Hofstetter low calorific gas flare.



**HOFGAS<sup>Ü</sup> - Lowcal S**

- ✓ Burns safely and efficiently with low methane content of 12..30 (50) vol.%
- ✓ High-temperature combustion
- ✓ High safety standard
- ✓ Easily portable and quick installation time
- ✓ Minimal maintenance requirements
- ✓ Compact, safe and inexpensive

### General specifications

Gas flow rate	40 - 600 Nm <sup>3</sup> /h
Burner capacity up to	1'800 (3'000) kW
Pressure at gas inlet	-60 mbar
Blower pressure rise max.	145 mbar
Methane concentration	12 - 30 (50) vol.%
Combustion temperature	1'000 - 1'200 °C
Residence time	> 0.3 s
Turn down ratio	1 : 5
Thermal turn down ratio	1 : 10
Expected sound pressure level at full load (at 15m distance and 2m height)	< 69 dB(A)

### Safety features

- Blower designed for gas of ATEX zone 1
- EEx motor
- Flame arrester
- Slam shut valve
- Burner control device with UV-detection

### Site preparation

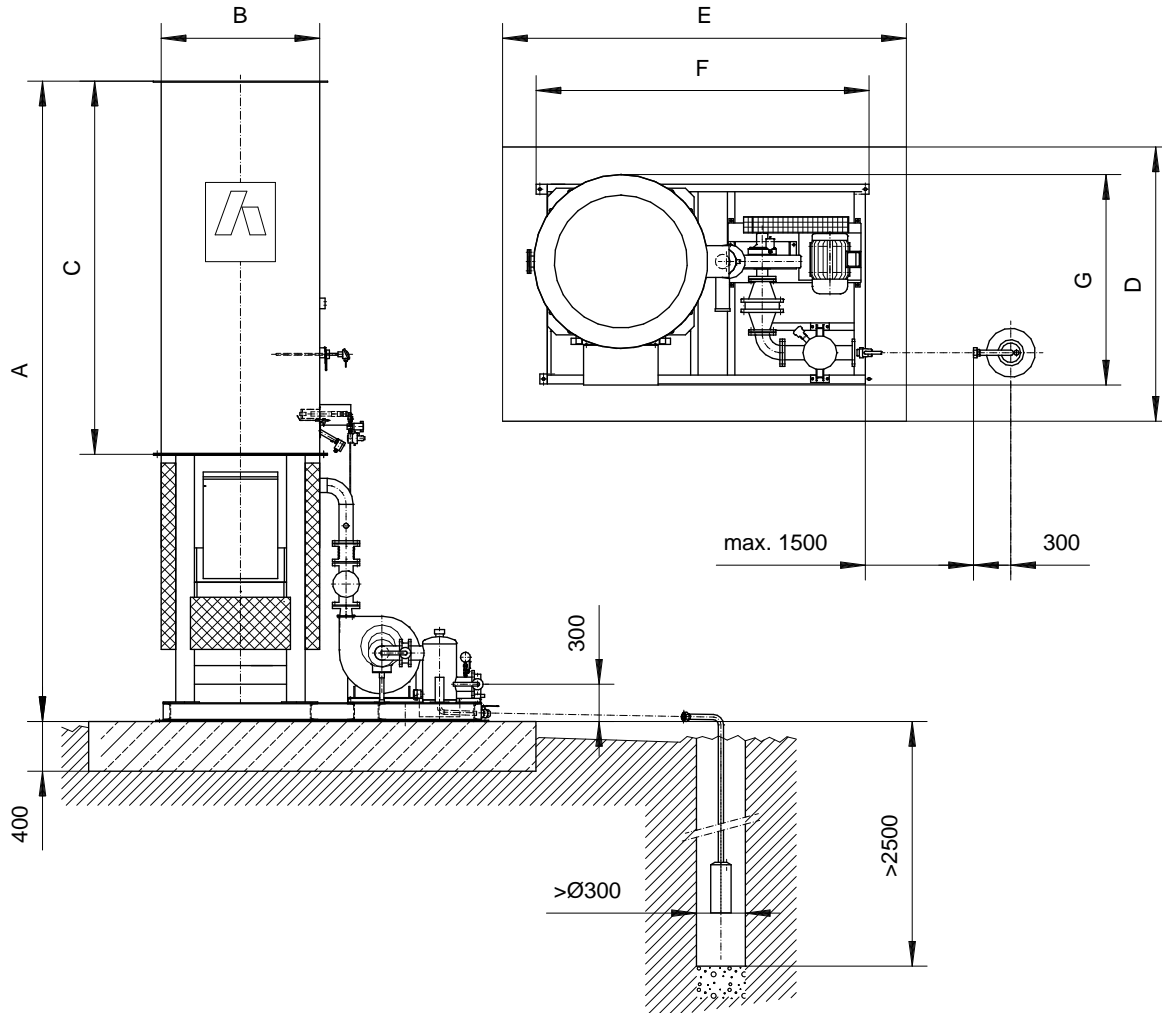
- Pre-dewatering
- Foundation
- Electricity supply
- Gas line connection
- Condensate disposal

### Options

- Container for blower and control
- Gas analysis system
- Suction pressure regulation
- Propane connection for ignition piping
- Gas flow measuring
- Frost protection

More options are available on request

# HOFGAS<sup>®</sup> - Lowcal



## Specification for standard units

HOFGAS <sup>i</sup> -	Gas flow rate (max.) Nm <sup>3</sup> /h	Burner capacity (max.) kW	Flange connection DN/PN	Power of el. motor kW	Fuse protection A	Suction pressure mbar	Blower pressure rise mbar	Dimension A mm	Dimension B mm	Dimension C mm	Dimension D mm	Dimension E mm	Dimension F mm	Dimension G mm	Weight (approx.) kg
Lowcal XS	40	120	40/16	2.5	20	-50	105	5'000	Ø 560	3'000	2'500	4'000	2'150	1'200	1'200
Lowcal S	150	450	50/16	3.3	20	-50	145	6'000	Ø 800	4'000	2'500	4'000	2'310	1'250	1'600
Lowcal M	300	900	80/16	4.1	25	-60	145	6'700	Ø 960	4'500	2'500	4'500	2'340	1'440	1'900
Lowcal L	600	1'800	100/16	5.5	32	-60	145	6'700	Ø 1'280	4'500	3'000	4'500	2'910	1'650	2'100