

# HOFGAS<sup>®</sup> - Sparky

## The Lean Compact Unit

The **HOFGAS<sup>i</sup>** - Sparky compact degassing unit is used for household waste landfills without gas utilisation.

**HOFGAS<sup>i</sup>** - Efficiency high temperature flare provides controlled combustion. Landfill gas is burned at temperatures between 1'000 and 1'200°C and a defined residence time. This ensures compliance with the emission regulations.

All components are mounted onto a robust galvanised steel skid. The control elements are integrated in a weather proof control cabinet directly fixed onto the supporting construction. The PLC-system ensures a reliable operation of the plant.

Using a simple crane, the plant can be set up on a prepared site in very short time. The **HOFGAS<sup>u</sup>** - Sparky complete extraction and flaring unit is immediately ready for operation.

Safe, high-level degassing at good value for money.



**HOFGAS<sup>u</sup>** - Sparky S

- ✓ Compact, safe, good value for money
- ✓ High safety standard
- ✓ Concealed flame
- ✓ Combusting temperature 1'000 - 1'200 °C
- ✓ Residence time > 0.3 seconds
- ✓ Automatic temperature control
- ✓ Quick and easy commissioning
- ✓ Minimal maintenance requirements

### General specifications

Gas flow rate	40 - 1'000 Nm <sup>3</sup> /h
Burner capacity up to	5'000 kW
Pressure at gas inlet	-50 mbar
Blower pressure rise max.	160 mbar
Methane concentration	30 - 50 vol.%
Combustion temperature	1'000 - 1'200 °C
Residence time	> 0.3 s
Turn down ratio	1 : 5
Expected sound pressure level at full load (at 15m distance and 2m height)	< 69 dB(A)

### Safety features

- EEx motor
- Flame arrester
- Slam shut valve
- Burner control device with UV-detection

### Site preparation

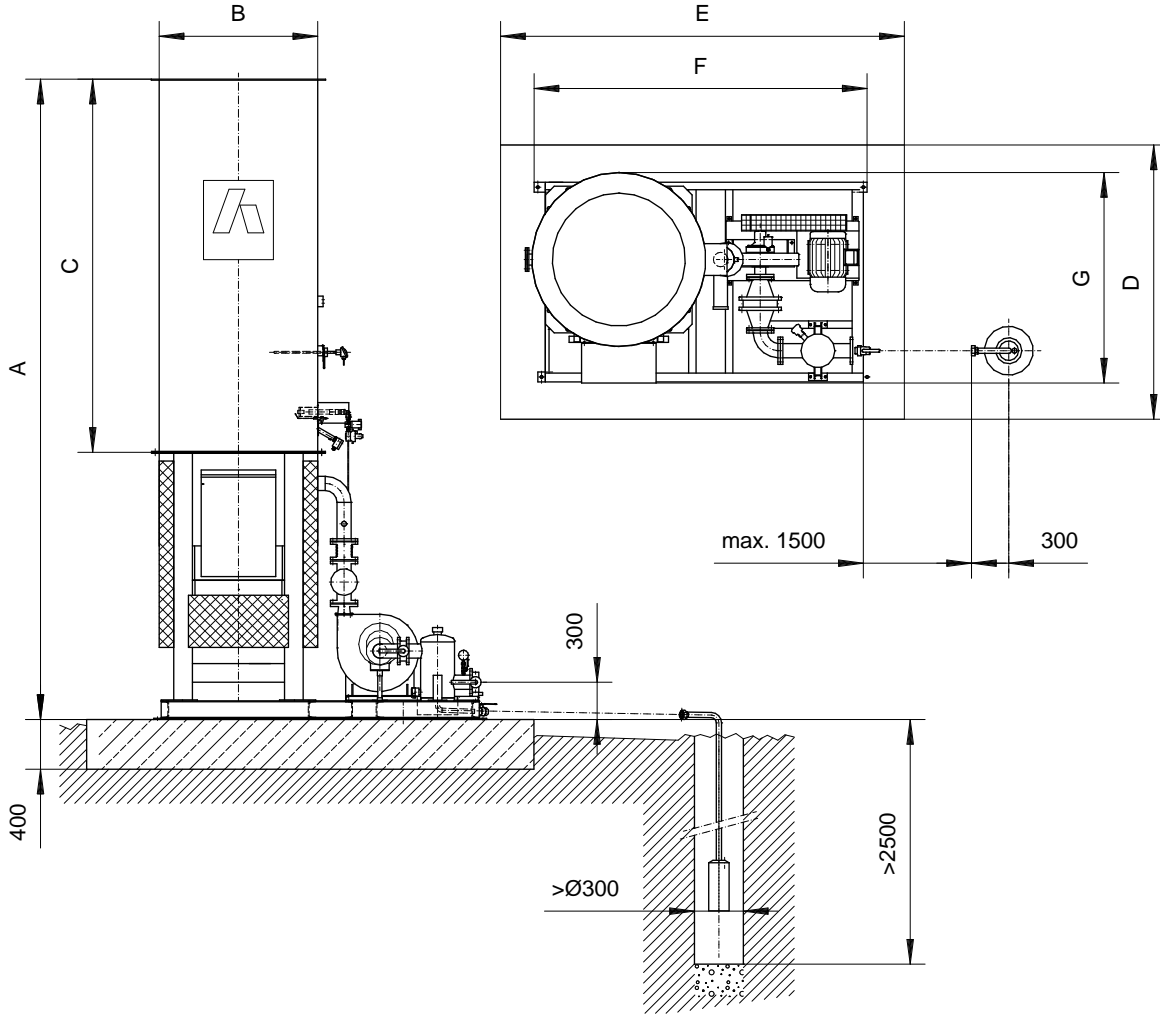
- Pre-dewatering
- Foundation
- Electricity supply
- Gas line connection
- Condensate disposal

### Options

- Dewatering lance
- Gas analysis system
- Pressure and temperature measuring devices
- Flow measuring
- Frost protection

More options are available on request

# HOFGAS<sup>®</sup> - Sparky



## Specification for standard units

HOFGAS <sup>i</sup> -	Gas flow rate (max.) Nm <sup>3</sup> /h	Burner capacity (max.) kW	Flange connection DN/PN	Power of el. motor kW	Fuse protection A	Suction pressure mbar	Blower pressure rise mbar	Dimension A mm	Dimension B mm	Dimension C mm	Dimension D mm	Dimension E mm	Dimension F mm	Dimension G mm	Weight (approx.) kg
Sparky XS	40	200	40/16	2.5	20	-50	105	5'000	Ø 560	3'000	2'500	4'000	2'150	1'200	1'200
Sparky S	150	750	50/16	3.3	20	-50	145	6'000	Ø 800	4'000	2'500	4'000	2'310	1'250	1'600
Sparky M	300	1'500	80/16	4.6	25	-60	145	6'700	Ø 960	4'500	2'500	4'500	2'340	1'440	1'900
Sparky L	600	3'000	100/16	5.5	32	-60	145	6'700	Ø 1'280	4'500	3'000	4'500	2'910	1'650	2'100
Sparky XL	800	4'000	125/16	15	40	-80	160	6'700	Ø 1'440	4'500	3'500	4'000	2'880	2'170	2'900
Sparky XXL	1'000	5'000	150/16	15	40	-80	160	7'200	Ø 1'590	5'000	3'500	4'500	3'360	2'220	3'400